



Saint Stephen's Way

A Community for Homeless Families with School Children

Summer 2019

NEWSLETTER

Issue #4

<https://www.ssway.org>

☎ (321) 802-3818

✉ office@ssway.org

OUR MISSION

Saint Stephen's Way provides affordable housing, along with supportive services, to homeless families referred by the Brevard School System.

Building Plan: "It's a Process, not a Schedule"

So says Erin Trauger, Civil Engineer and lead engineer on the SSWay site plan. "There's a lot of steps to go through and no set time to get them all done." But there has been good progress! "We are moving forward and this is the time I often see a project's life grow and get the most momentum!" Erin recently met with the design team, and made some adjustments to update the Preliminary Concept drawing (now version #4 depicted below). "We had some great discussions and input. There are still questions to answer regarding constructing on this very unique piece of property," because the natural topography is a major factor in the design and construction plan. "However, there were also some big answers provided at the meeting!" As a result, **the team has now decided to move forward with applications to both the St. Johns River Water Management District and the City of Melbourne** for stormwater and site plan review. "These are big steps for the project, and I am excited to be a part of the progress!" A Professional Engineer, Erin is experienced in all types of construction projects. *(Continued on page 2...)*

EXECUTIVE BOARD

Executive Director

John Farrell

President

Eddie Struttmann

Vice President

Don Lees

Treasurer

Dave Myler

Secretary

John Farrell

Board Members

Tom Boyle

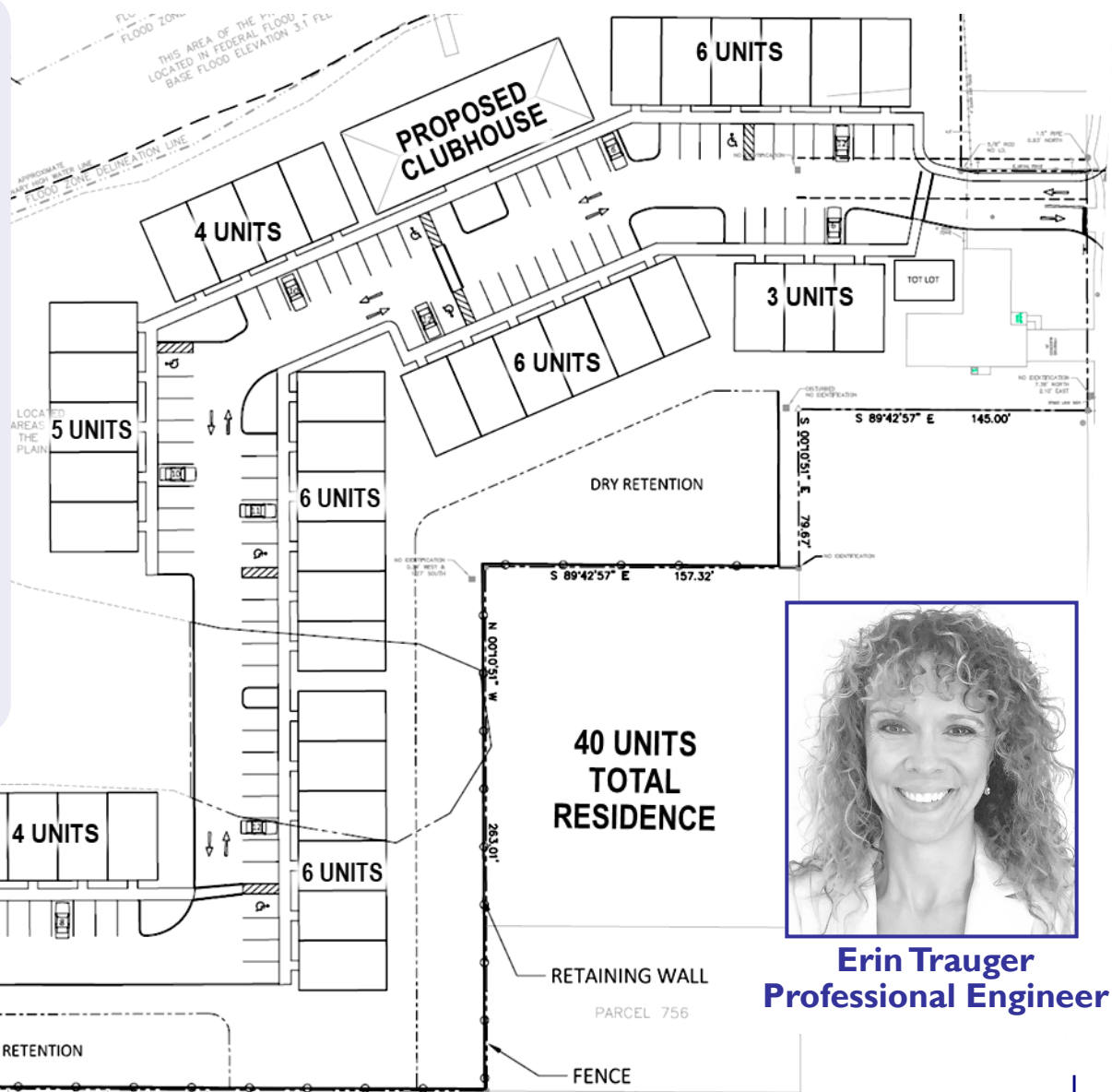
Linda Lees

Bob McCarthy

Jan McCarthy

Brian Bussen

Glenda Shirhall



Erin Trauger
Professional Engineer

(Continued from page 1...) "I've worked as a Civil Engineer in the Brevard County area for the better part of the last two decades." Most of that time Erin was part of an architectural group, but over the last few years she's been in business for herself. Early this year, Erin learned about the SSWay project from others who knew she had the right skills for it. "It seemed like an exciting opportunity, so I put in a proposal and got selected! This is a good opportunity to serve the community and be part of a great team that was already assembled," referring to Brian Bussen, Hugh Evans, Ken Lebron, and Scott Buescher, among others. "Now that I've had the opportunity to work with the SSWay team, I have really enjoyed begin part of the bigger plan here!" Asked for her thoughts about SSWay itself, Erin was quick to answer. "I've sat in some counsel meetings across Brevard County, and I hear the concern for homeless families with school age children. SSWay will be a great benefit to this community. Also, if I learn anything from this team it will be about good stewardship and how they direct their focus on work with a mission!"

Round-up to 1\$ Donations No Small Change!

Our Change for Children retail fundraiser has begun signing up businesses for our annual round-up at the register campaign! Through help from the students of Melbourne Central Catholic we are asking retailers to sign up for an eight week period to ask their patrons to round-up the change on their bill to the nearest dollar. For those retailers that cannot accommodate the round-up effort we will be offering coin collection boxes or paper icons to post a dollar specific donation. **If you have a retail establishment or know of a retailer that might want to be involved with our Change for Children campaign, please refer them through my email (bottom of this article) and we will be happy to follow up with them.** We at Saint Stephen's Way believe that this project is a community driven project and that it will be through the support of the community that these families reach their full human potential. If you have any questions about Golftoberfest, our Change for Children campaign, or ways that you can help please feel free to contact me at: Eddie@ssway.org. Thank You and God Bless You!



**Eddie Struttmann
President, SSWay**

ADVISORY BOARD

Vision Committee

Eddie Struttmann
John Farrell
Don Lees
Linda Less
Bob McCarthy
Jan McCarthy

Finance & Accounting

Dave Myler

Real Estate Develop.

Brian Bussen
Jeff Hartnett
Ken Lebron

Legal

Tom Boyle

HR & Processes

Don McGee

Volunteers & Partners

Sally Shinn
Lyman Rowen
Jay Casey

PR & Fundraising

Glenda Shirall
Jock Walker
Rev. Garry Edwards
Rick Thompson



It's that time of year again! Time for the Third Annual Golftoberfest Tournament!

The Rotary Club of Melbourne Beach is hosting this annual event on **Saturday, October 12th** to benefit Saint Stephen's Way. Golftoberfest is that special event I look forward to every year. What better way to help further our mission to provide housing for the homeless children and their families in our public school system than a nice round of golf with family and friends! The tournament will be held at the beautiful Aquarina Beach and Country Club. Aquarina has recently made some improvements to the course and I'm sure it will be challenging! Lunch will be hosted by The Brassie Grill at the club house and a complimentary continental breakfast will be served during the morning check-in process. Tee-off will be at 8:30am and this will be a scramble format tournament. With

a longest drive, closest to the pin (men and women), closest to the line and a putting contest – there will be plenty of opportunities to win a prize! **The tournament is limited to 76 players and is expected to fill quickly, so secure your team's spot in what is surely to be a great day of golf by visiting www.rotarygolftoberfest.com and signing up. Registrations can also be turned in at the Aquarina Golf Club, or by mailing them to:**

Golftoberfest, c/o Glenda Shirhall, St. Stephen's Way, 2310 Lipscomb Street, Melbourne, FL 32901

However, if golf isn't your sport, there still are many ways for you to contribute to the cause and the event through sponsorship opportunities and through donations for our silent auction. If you or your organization would like to make a gift basket for the Golftoberfest silent auction, we could really use your help as this has been a significant part of our fundraising efforts in the past. As always, we are looking for Event, Clubhouse, and Hole sponsors—these are great ways for you and your company to support a worthwhile cause to help change lives of children and their families. **Saint Stephens Way will implement a holistic, family-specific approach to ending the cycle of homelessness for the families we serve.**

WANT TO SEE FULL SSWAY STORY IN LESS THAN 10 MINUTES? GO HERE: <https://vimeo.com/347109269>